



THE AVENUE

6 Ashland Drive , Coalville, LE67 3NH £245,000

Welcome to this beautifully maintained and tastefully decorated 2 bedroom semi-detached bungalow situated on the highly sought after Ashland Drive in Coalville. If you're looking for a stylish and contemporary home with ample off-road parking, a private rear garden, and a range of modern features, then this property ticks all the boxes.

Upon entering, you'll immediately appreciate the care and attention that has been put into making this bungalow a perfect living space. The spacious hallway leads to a bright and airy lounge, which is perfect for relaxing or entertaining guests. The neutral color palette provides a calm and inviting atmosphere throughout.

The modern kitchen, fitted with sleek cabinets and ample storage space and provides a delightful area for cooking and dining. The kitchen leads through to a conservatory which in turn provides access to the rear garden through French doors, allowing for easy access to outdoor dining and entertainment.

This property boasts two generously sized bedrooms, both offering comfort and tranquility. The master bedroom features large windows that allow natural light to flood in, creating a cozy

Viewing

Please contact our Berkley Kibworth Office on 0116 2796161 if you wish to arrange a viewing appointment for this property or require further information.



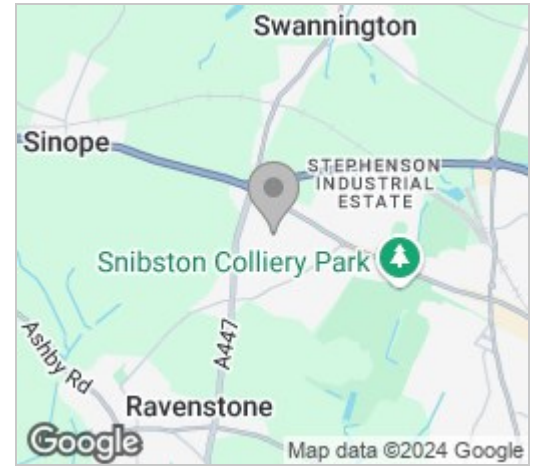
 2
  1
  1
 

THE AVENUE

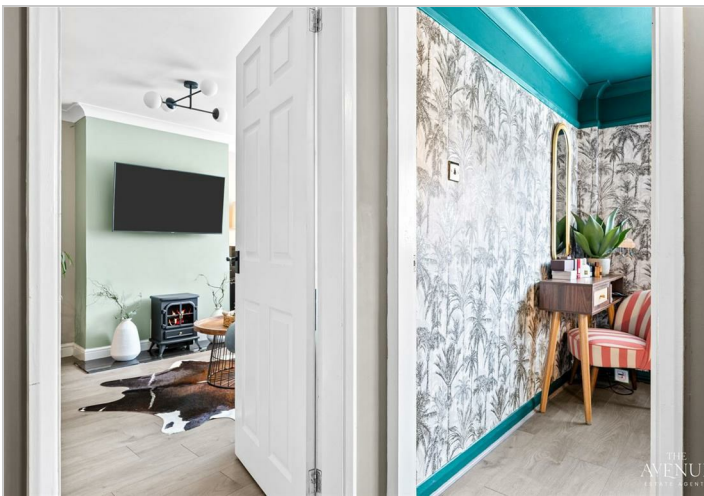
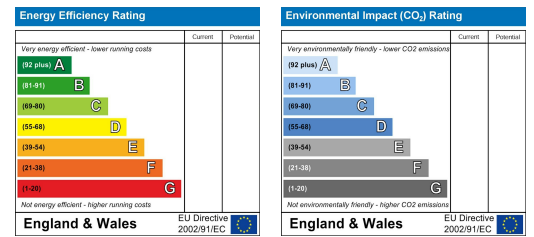
Floor Plan



Area Map



Energy Efficiency Graph



These particulars, whilst believed to be accurate are set out as a general outline only for guidance and do not constitute any part of an offer or contract. Intending purchasers should not rely on them as statements of representation of fact, but must satisfy themselves by inspection or otherwise as to their accuracy. No person in this firm's employment has the authority to make or give any representation or warranty in respect of the property.