



# 113 Westfield Road

, Leicester, LE3 6HW

## Price Guide £225,000

Offered with no onward chain this semi-detached house that being in need of renovation offers a tremendous potential for those with a vision seeking a property to make their own.

This property is double glazed and boasts three bedrooms, the bathroom has been recently installed. The house features two reception rooms, providing plenty of space for relaxation and entertainment. These areas offer an abundance of possibilities for interior design and layout planning, ensuring you can create a living space that suits your unique style and needs.

Though requiring renovation, this is a property filled with potential. It is awaiting transformation, capable of becoming a beautiful and comfortable home. The property is ideal for buyers looking to undertake a renovation project and create their dream home from scratch.

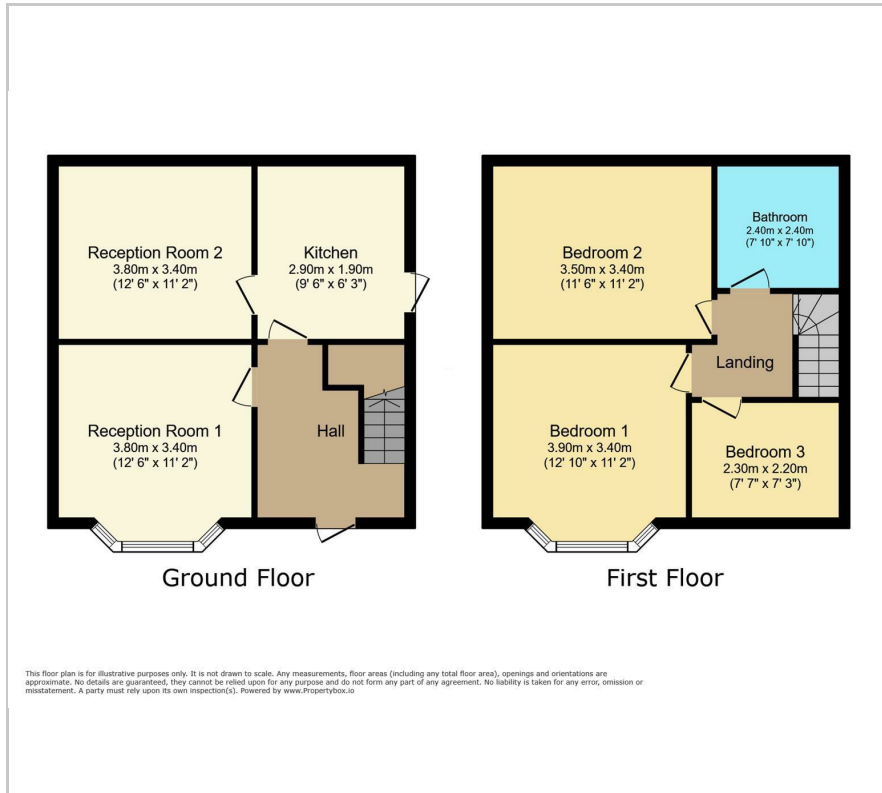
- In Need of Modernisation
- Three Bedrooms
- Semi-Detached
- Off Road Parking
- Western Park
- Garage

### Viewing

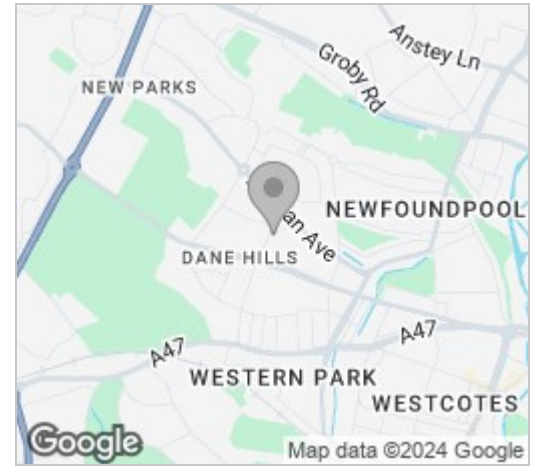
Please contact our Berkley Leicester Office on 0116 2544755 if you wish to arrange a viewing appointment for this property or require further information.



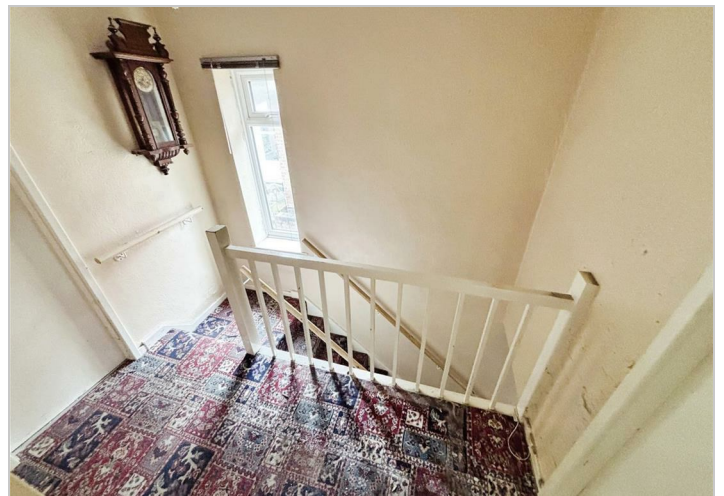
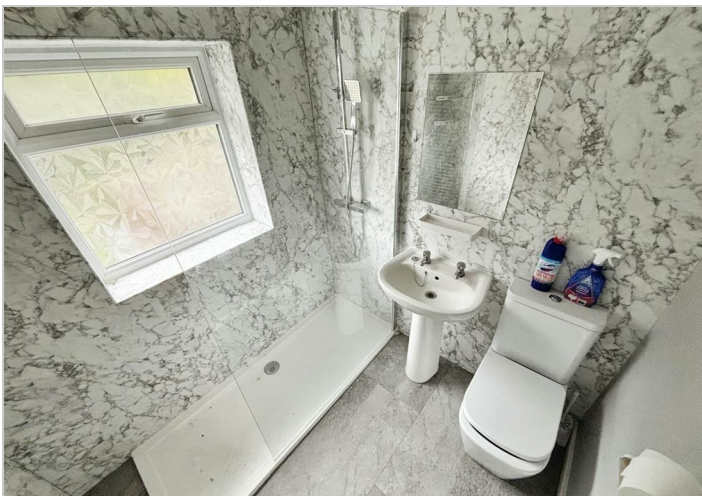
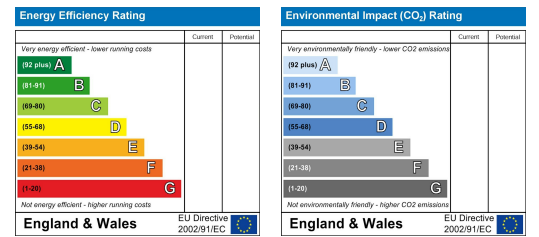
# Floor Plan



# Area Map



# Energy Efficiency Graph



These particulars, whilst believed to be accurate are set out as a general outline only for guidance and do not constitute any part of an offer or contract. Intending purchasers should not rely on them as statements of representation of fact, but must satisfy themselves by inspection or otherwise as to their accuracy. No person in this firms employment has the authority to make or give any representation or warranty in respect of the property.