



9 Millfield Close

, Ashby-De-La-Zouch, LE65 2JS

Offers Over £269,500

Welcome to this impeccably presented three-bedroom link detached family home nestled within the tranquil confines of Ashby De La Zouch. Positioned on a peaceful cul-de-sac, this residence embodies the epitome of suburban bliss. As you step inside, you are greeted by a spacious lounge adorned with a feature fireplace, perfect for cozy evenings with loved ones. The seamless flow leads you into the open-plan dining/kitchen area, offering a modern hub for culinary delights and vibrant gatherings. Adjacent lies a charming conservatory, ideal for basking in natural light and embracing serene garden views. Convenience is paramount with a downstairs w/c and a generous 24ft garage providing ample storage space.

Ascending the staircase, you will find three thoughtfully appointed bedrooms, comprising two generous doubles and a comfortable single, each offering peaceful retreats for restful nights. Completing the upper level is a sleek family bathroom, exuding contemporary elegance and providing a haven for relaxation.

Externally, the property boasts a sizable south-facing garden to the rear, providing an idyllic setting for outdoor enjoyment and alfresco dining. Ample parking at the front ensures convenience for residents and guests alike.

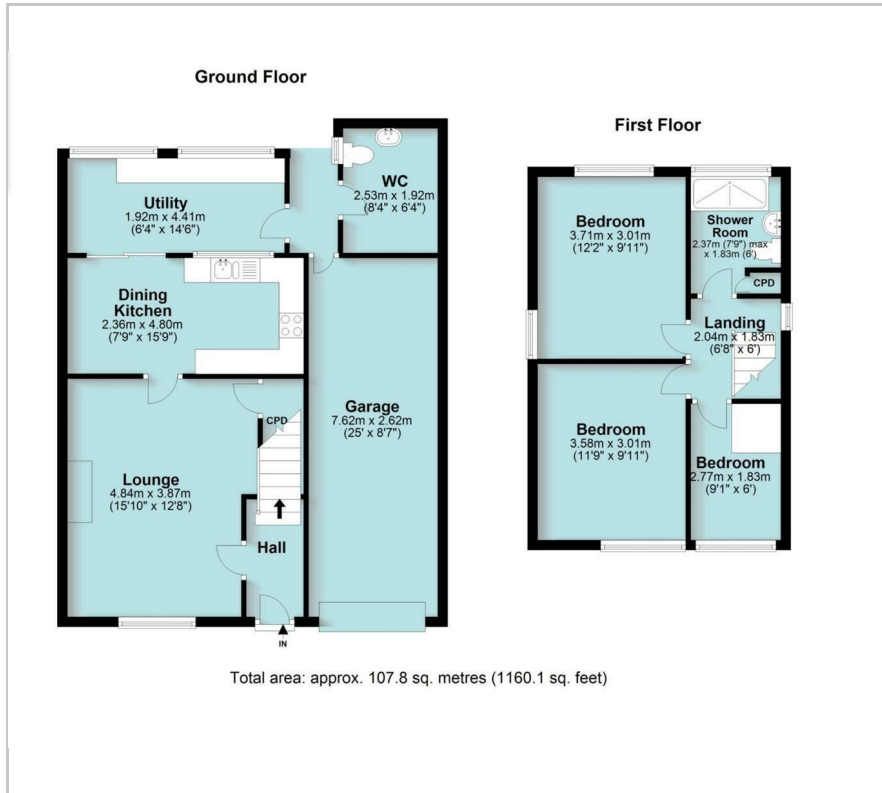
Viewing

Please contact our Berkley Kibworth Office on 0116 2796161 if you wish to arrange a viewing appointment for this property or require further information.



3 1 1 D

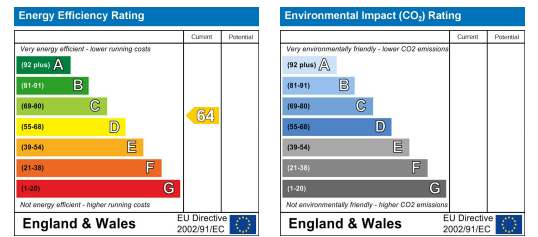
Floor Plan



Area Map



Energy Efficiency Graph



These particulars, whilst believed to be accurate are set out as a general outline only for guidance and do not constitute any part of an offer or contract. Intending purchasers should not rely on them as statements of representation of fact, but must satisfy themselves by inspection or otherwise as to their accuracy. No person in this firm's employment has the authority to make or give any representation or warranty in respect of the property.