



64 Ridley Street

, Leicester, LE3 0QJ

Offers Over £160,000

Discover this charming two bedroom mid terrace house located in the sought-after West End of Leicester. This property features a spacious open plan lounge and dining room, a modern kitchen, two cozy bedrooms, and a family bathroom with a four piece suite. Conveniently situated near local amenities, Leicester City Centre, Fosse Park Shopping Centre, and major motorway networks.

Viewing

Please contact our Berkley Kibworth Office on 0116 2796161 if you wish to arrange a viewing appointment for this property or require further information.

2 1 1 E

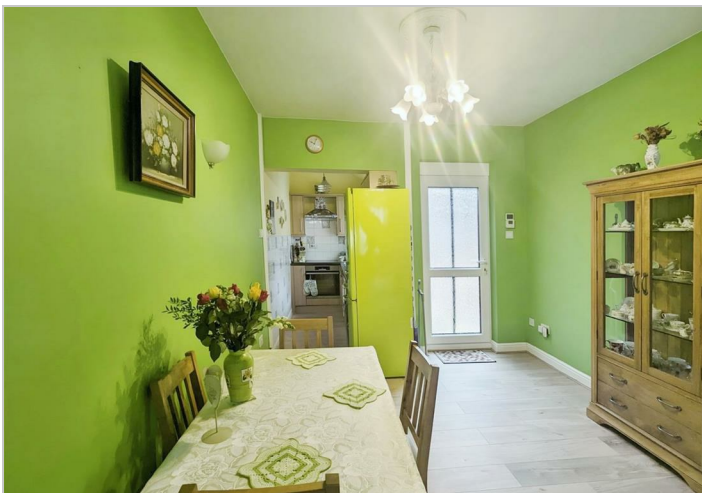
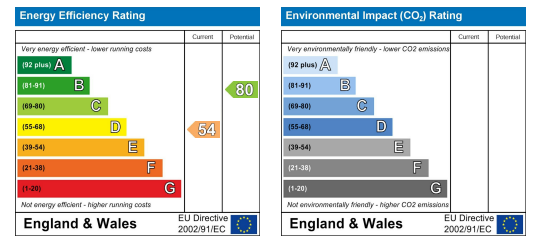
Floor Plan



Area Map



Energy Efficiency Graph



These particulars, whilst believed to be accurate are set out as a general outline only for guidance and do not constitute any part of an offer or contract. Intending purchasers should not rely on them as statements of representation of fact, but must satisfy themselves by inspection or otherwise as to their accuracy. No person in this firm's employment has the authority to make or give any representation or warranty in respect of the property.