



52 Lambert Road

, Leicester, LE3 2BN

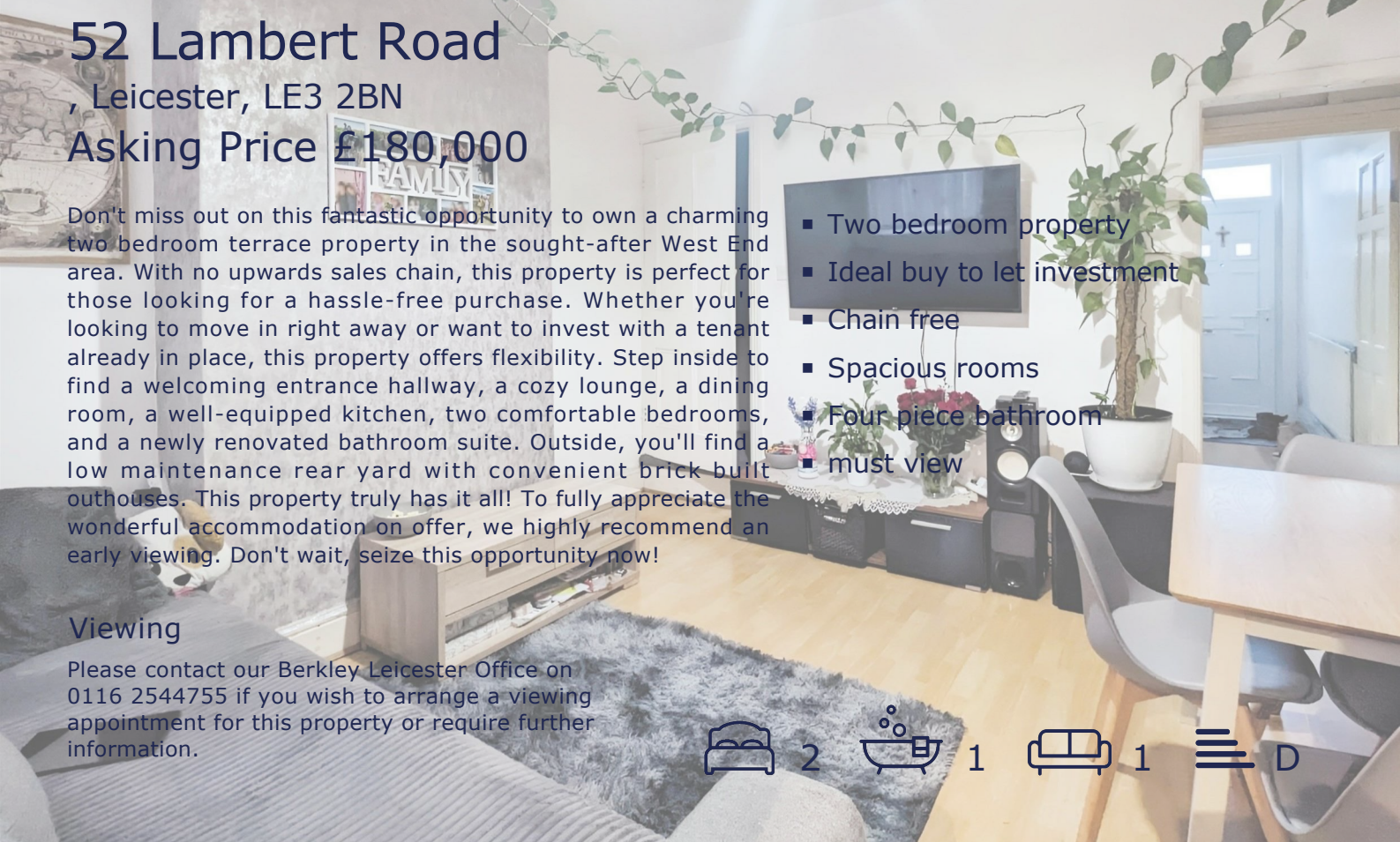
Asking Price £180,000

Don't miss out on this fantastic opportunity to own a charming two bedroom terrace property in the sought-after West End area. With no upwards sales chain, this property is perfect for those looking for a hassle-free purchase. Whether you're looking to move in right away or want to invest with a tenant already in place, this property offers flexibility. Step inside to find a welcoming entrance hallway, a cozy lounge, a dining room, a well-equipped kitchen, two comfortable bedrooms, and a newly renovated bathroom suite. Outside, you'll find a low maintenance rear yard with convenient brick built outhouses. This property truly has it all! To fully appreciate the wonderful accommodation on offer, we highly recommend an early viewing. Don't wait, seize this opportunity now!

- Two bedroom property
- Ideal buy to let investment
- Chain free
- Spacious rooms
- Four piece bathroom
- must view

Viewing

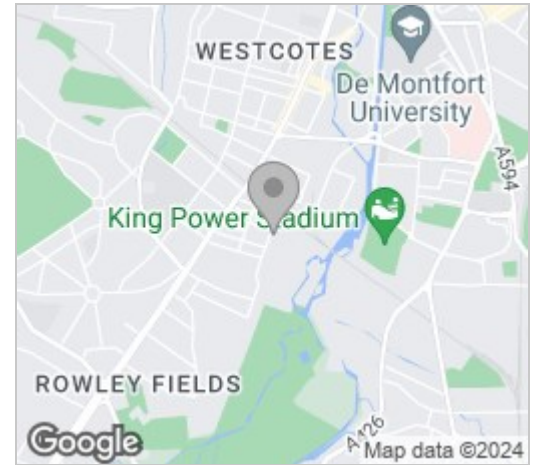
Please contact our Berkley Leicester Office on 0116 2544755 if you wish to arrange a viewing appointment for this property or require further information.



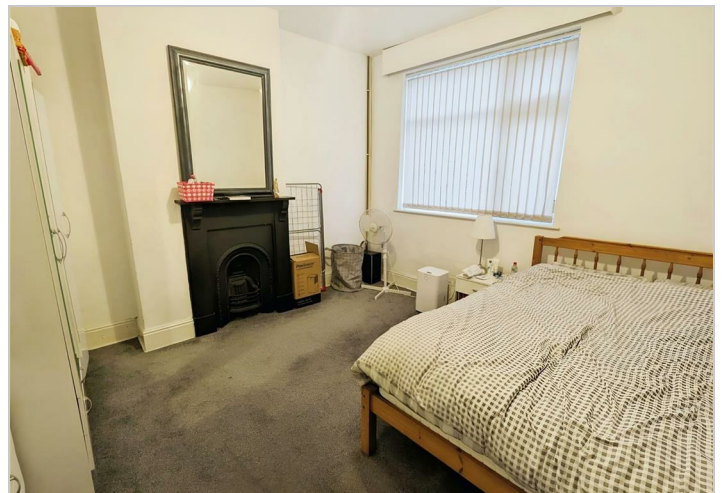
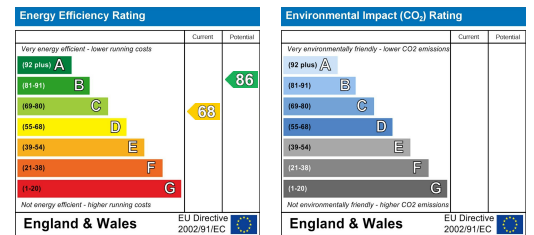
Floor Plan



Area Map



Energy Efficiency Graph



These particulars, whilst believed to be accurate are set out as a general outline only for guidance and do not constitute any part of an offer or contract. Intending purchasers should not rely on them as statements of representation of fact, but must satisfy themselves by inspection or otherwise as to their accuracy. No person in this firm's employment has the authority to make or give any representation or warranty in respect of the property.