



34 Southside Road

, Leicester, LE3 2YZ

Offers Over £300,000

Ideal for expanding families, this detached residence with three bedrooms is perfectly located for easy access to the M1/M69, Leicester City Centre, Fosse Park, and Meridian Leisure. Viewing in person is essential to truly grasp the charm of this property. The bright and spacious layout comprises an entrance hallway, a lounge that flows into the dining room, a downstairs cloakroom, and a kitchen. Upstairs, there are three bedrooms, with the master bedroom featuring an en-suite bathroom. Outside, there is a driveway leading to an integral garage at the front, while the rear garden is beautifully maintained.

- Three Bedrooms
- Good sized kitchen
- Through Lounge/diner
- Downstairs Cloakroom
- Integral garage
- En-Suite to master bedroom
- Wet Room
- Must View

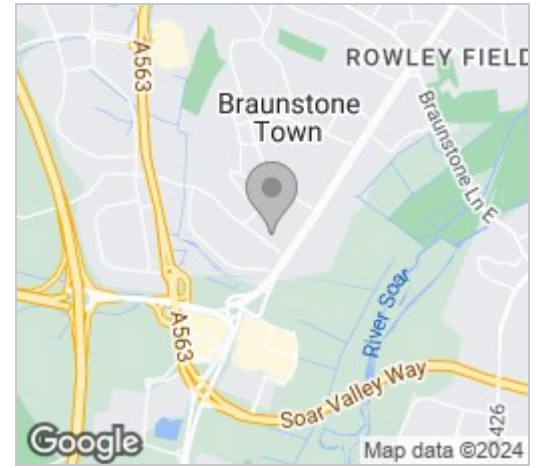
Viewing

Please contact our Berkley Leicester Office on 0116 2544755 if you wish to arrange a viewing appointment for this property or require further information.

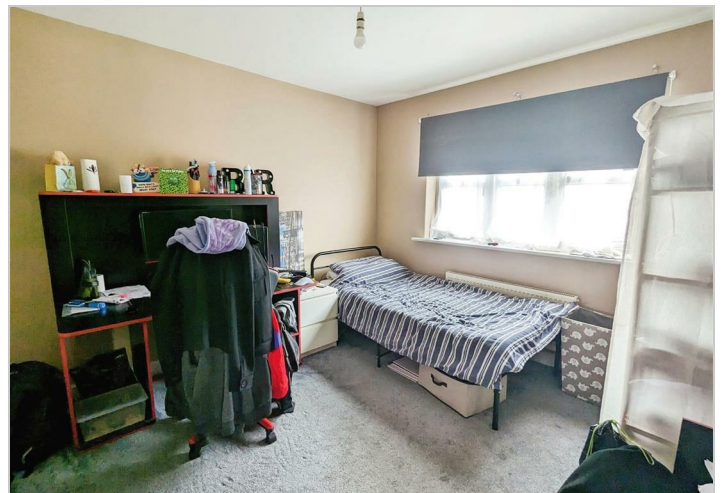
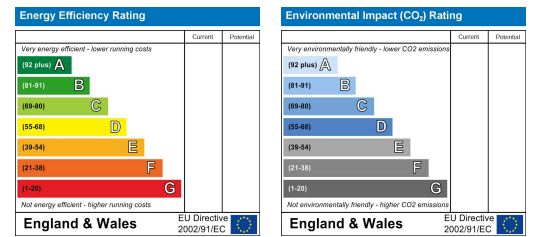
Floor Plan



Area Map



Energy Efficiency Graph



These particulars, whilst believed to be accurate are set out as a general outline only for guidance and do not constitute any part of an offer or contract. Intending purchasers should not rely on them as statements of representation of fact, but must satisfy themselves by inspection or otherwise as to their accuracy. No person in this firm's employment has the authority to make or give any representation or warranty in respect of the property.