



80 Tyndale Street

, Leicester, LE3 0QP
£180,000

NO UPWARD CHAIN! Discover this surprisingly spacious traditional mid-terraced home located in a sought-after area just off Hinckley Road, with easy access to Leicester's lively West End. The ground floor features two reception rooms, a well-equipped kitchen, a lobby area, and a convenient bathroom. Upstairs, you'll find a landing leading to three generously sized bedrooms. The exterior boasts a low-maintenance garden to the rear. This property is equipped with double glazing and gas central heating, making it an excellent choice for first-time buyers or as a buy-to-let investment. A viewing is essential to truly appreciate the generous living space available!

Viewing

Please contact our Berkley Leicester Office on 0116 2544755 if you wish to arrange a viewing appointment for this property or require further information.

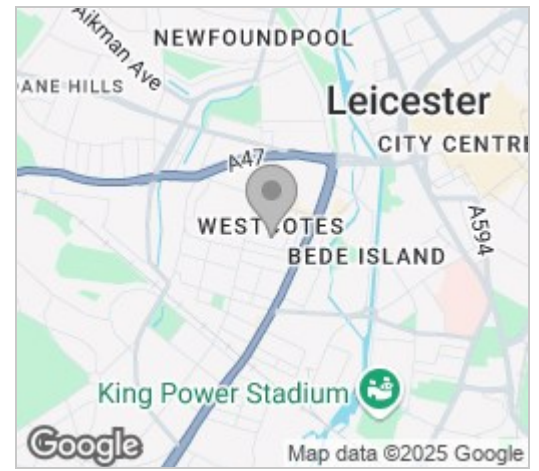
3 1 2



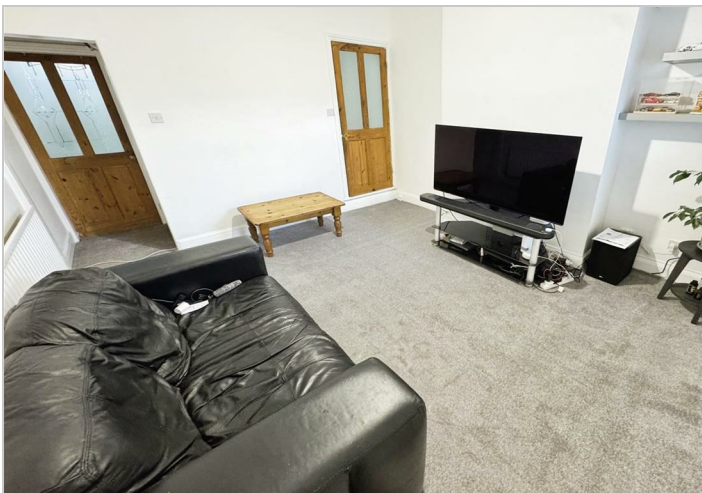
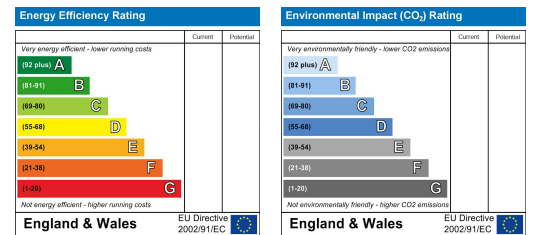
Floor Plan



Area Map



Energy Efficiency Graph



These particulars, whilst believed to be accurate are set out as a general outline only for guidance and do not constitute any part of an offer or contract. Intending purchasers should not rely on them as statements of representation of fact, but must satisfy themselves by inspection or otherwise as to their accuracy. No person in this firm's employment has the authority to make or give any representation or warranty in respect of the property.