



13 Rolleston Close

, Market Harborough, LE16 8BZ

Offers Over £200,000

Located in the sought-after neighborhood of Market Harborough, this contemporary mid-town house boasts two bedrooms and is conveniently situated within walking distance of the town center, local schools, and the Railway Station, providing direct links to London. The property offers a spacious layout, including an inviting Entrance Hall, a cozy Lounge, and a modern Kitchen Diner with ample space for appliances. two good sized bedrooms and a modern Bathroom is complete with a Shower over Bath. Outside, the property boasts a delightful Rear Garden with a well-maintained lawn, a charming patio area, and a practical Shed for storage. Additionally, there is a Garden with gate access to the front of the property, ensuring convenience. Off-road parking is available for two vehicles, providing ease and peace of mind. Don't miss out on the opportunity to make this modern and conveniently located house your new home!

- Ideal Location
- Two bedrooms
- Perfect buy to let or first time purchase
- No chain
- Must be seen
- Modern kitchen/diner
- Parking

Viewing

Please contact our Berkley Leicester Office on 0116 2544755 if you wish to arrange a viewing appointment for this property or require further information.

2
 1
 1
 D

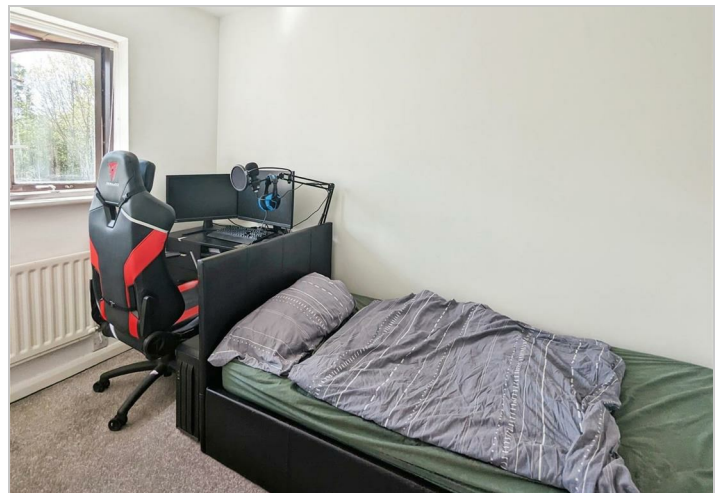
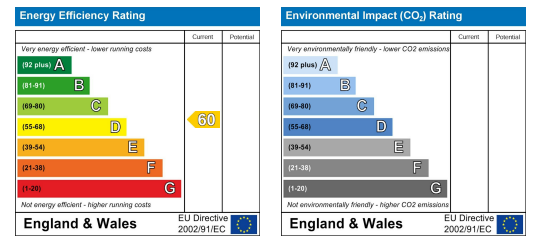
Floor Plan



Area Map



Energy Efficiency Graph



These particulars, whilst believed to be accurate are set out as a general outline only for guidance and do not constitute any part of an offer or contract. Intending purchasers should not rely on them as statements of representation of fact, but must satisfy themselves by inspection or otherwise as to their accuracy. No person in this firm's employment has the authority to make or give any representation or warranty in respect of the property.