



# Tolsons Mill Lichfield Street

Fazeley, Tamworth, B78 3QA

## £284,995

Plot 17, The Longwood - Reserve select plots and receive LUXURY FLOORING, TURF & £8000 DEPOSIT PAID\*\*

Presenting Plot 17, The Longwood – an exquisite three-bedroom family home in the prestigious development by award-winning developer, Peveril Homes. This striking property, located within The Mews at Tolsons Mill, offers a high-specification finish throughout, ensuring luxury and comfort in every detail.

**Ground Floor:**

- An open-plan kitchen, dining, and lounge area, superbly equipped with top-of-the-line appliances.
- A convenient downstairs W/C.

**First Floor:**

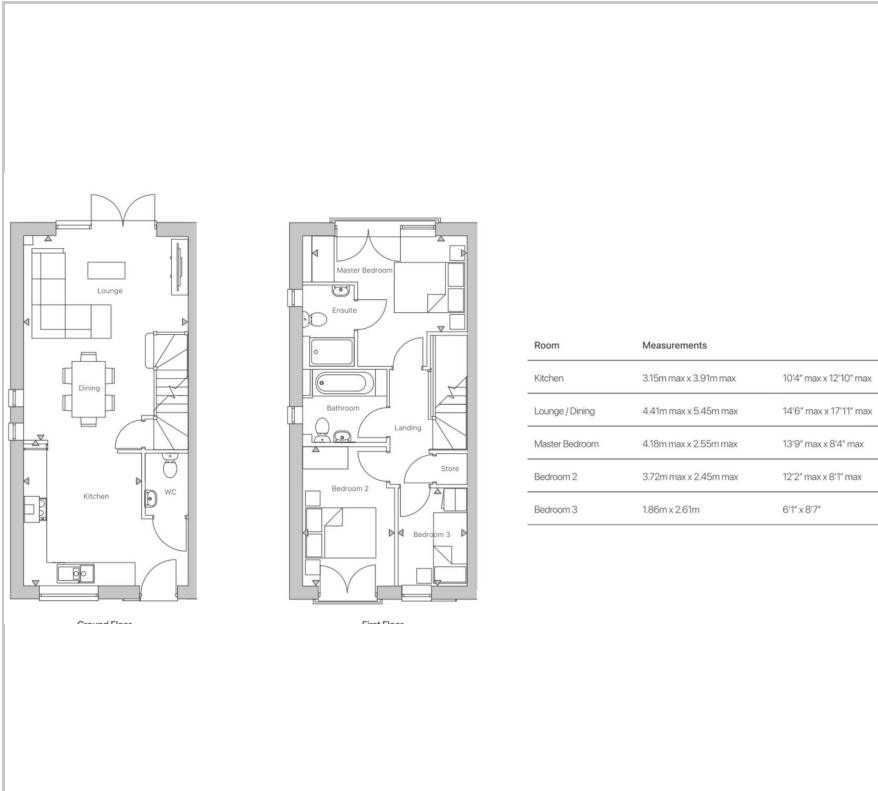
- Three generously proportioned bedrooms.
- A family bathroom.
- An ensuite to the master bedroom, providing a private retreat.

### Viewing

Please contact our Berkley Kibworth Office on 0116 2796161 if you wish to arrange a viewing appointment for this property or require further information.



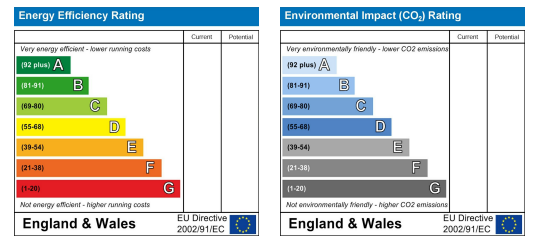
## Floor Plan



## Area Map



## Energy Efficiency Graph



These particulars, whilst believed to be accurate are set out as a general outline only for guidance and do not constitute any part of an offer or contract. Intending purchasers should not rely on them as statements of representation of fact, but must satisfy themselves by inspection or otherwise as to their accuracy. No person in this firm's employment has the authority to make or give any representation or warranty in respect of the property.